

# HOW ELECTRICITY GETS TO YOUR HOME

Electricity has become an integral part of our day-to-day lives. One thing you may not realize is just how far electricity travels before it reaches your home.

Check out all of the steps it takes to keep your lights on.

1

## GENERATORS

There are several generation sources used to power energy needs for the province. Supply mix for the provincial electricity grid is determined by Ontario Power Generation and the Independent Electricity System Operator.



2

## SUB-STATION

Electricity from the generators is fed through a transformer sub-station that dials up the voltage, so it can efficiently run across transmission lines that cover more than 30,000 km.

3

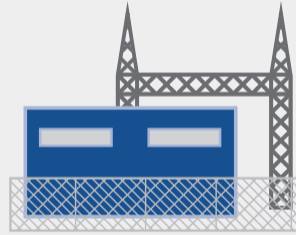
## TRANSMISSION

These transmission lines are the high voltage highway that routes electricity across the province to local electricity distributors. The majority of the transmission lines and towers are owned by Hydro One.

4

## KITCHENER-WILMOT HYDRO TRANSFORMER STATION

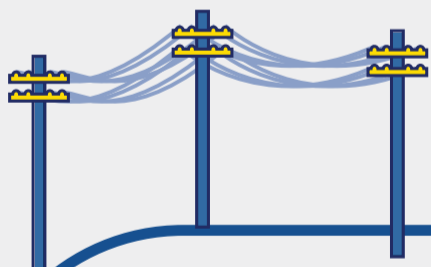
Once electricity reaches Kitchener-Wilmot Hydro, your electricity distributor, the voltage is stepped down, so it can travel across smaller power lines.



5

## KITCHENER-WILMOT HYDRO POWER POLES

Next electricity is routed from our transformer station through feeders across Kitchener and Wilmot Township. Each feeder supports a few hundred customers.



6

## FINAL TRANSFORMER

Electricity is stepped down one last time through a final transformer, which can be located above or below ground. Electricity is then fed through your meter at a voltage suitable for your home to use. Each transformer supports roughly a dozen customers.

